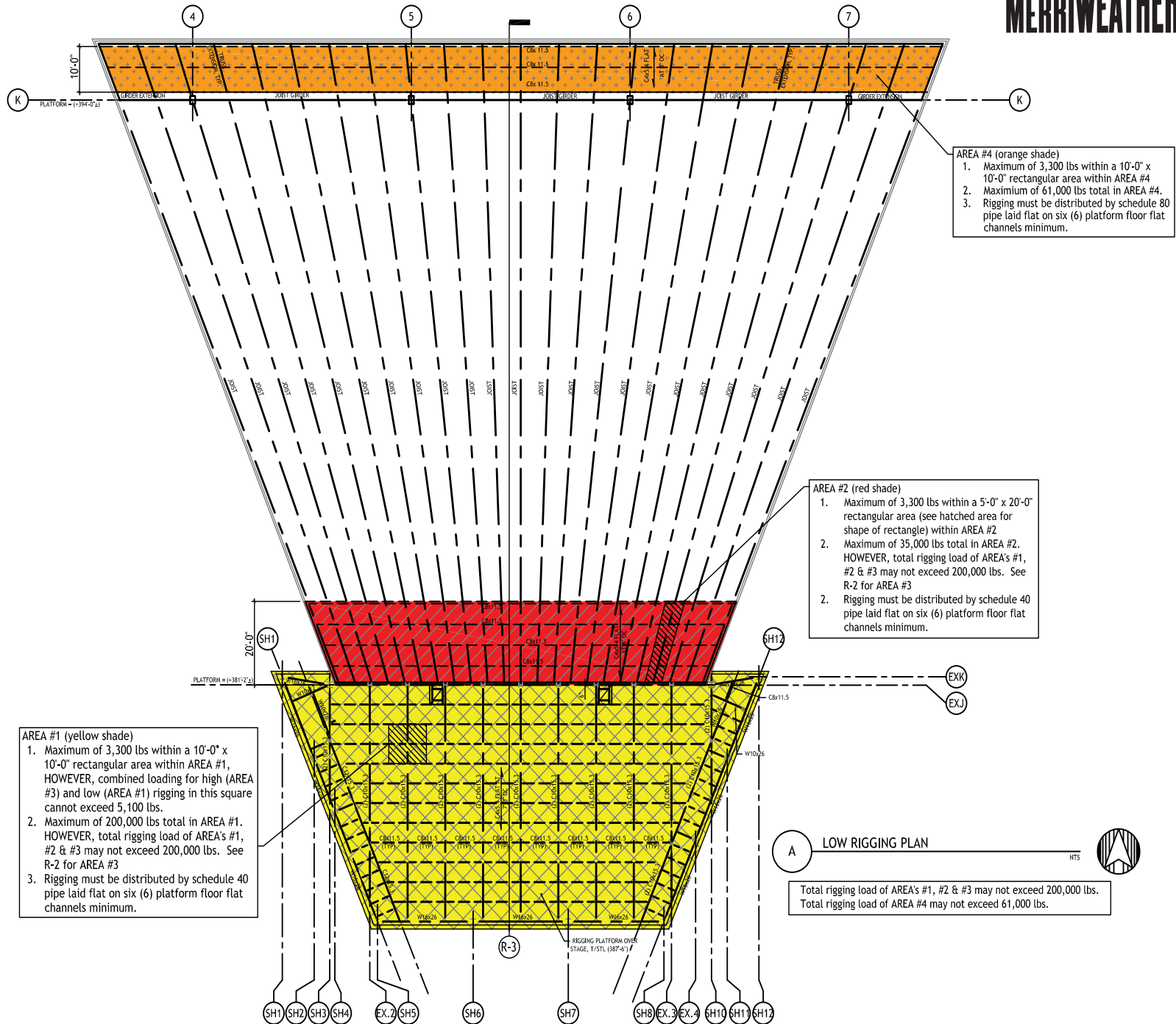
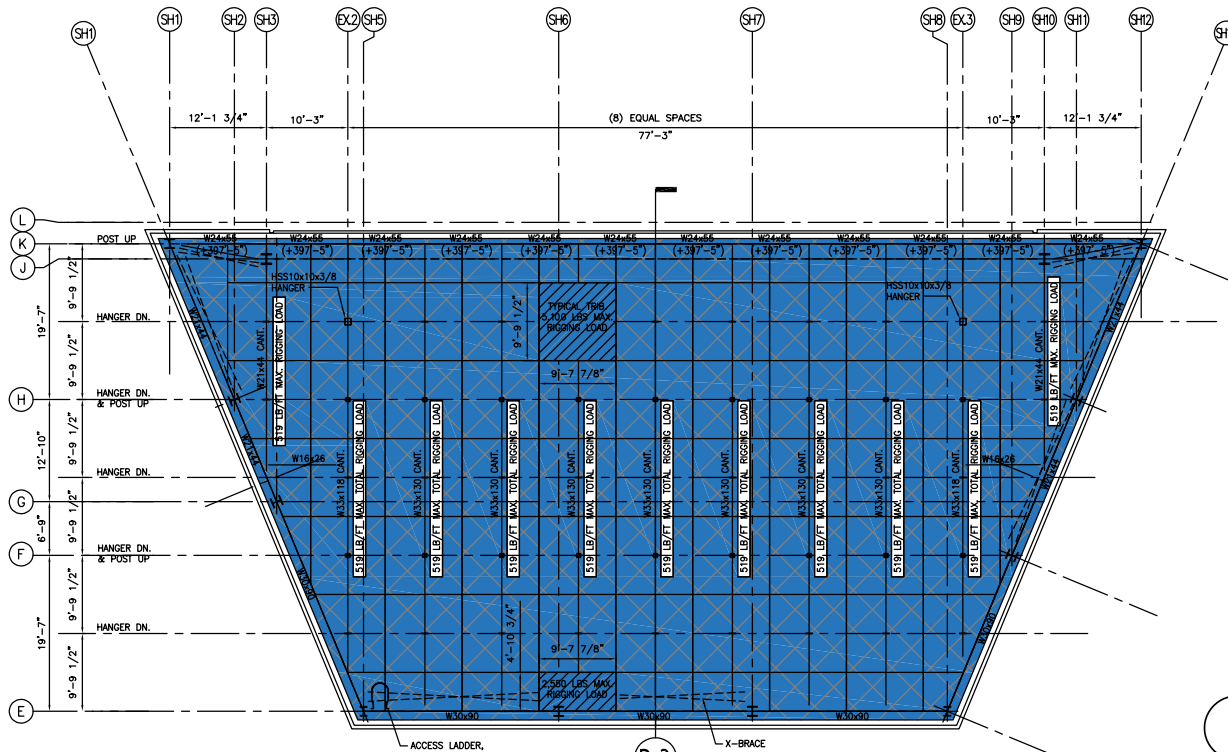


LOW RIGGING

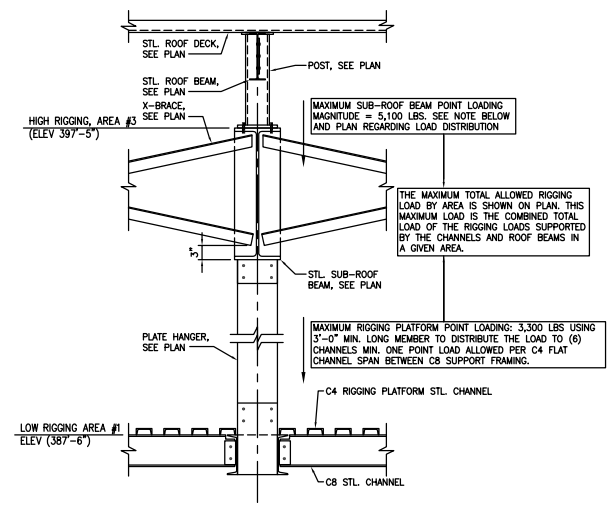
MERRIWEATHER POST PAVILION



HIGH RIGGING



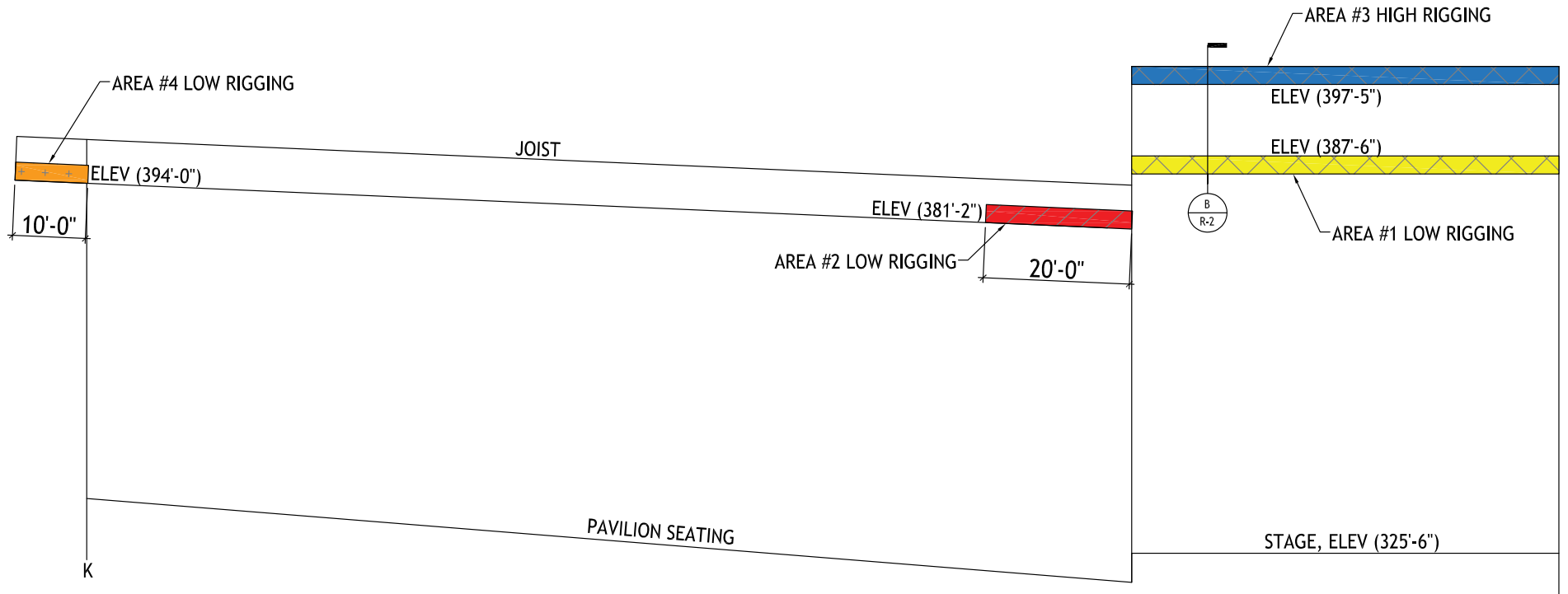
A HIGH RIGGING PLAN OVER STAGE (AREA #3)



B TYPICAL RIGGING PLATFORM HANGER SECTION THROUGH AREAS #1 AND #3

1. Total rigging load of AREA's #1 & #3 may not exceed 200,000 lbs, HOWEVER, the total rigging load of AREA's #1, #2 & #3 may not exceed 200,000 lbs.
2. See plan for maximum total rigging load per hatched area. This is the maximum vertical suspended rigging load allowed in the hatched region including the platform channel loads and load supported directly by the sub-roof beam (see detail for more information). The maximum combined channel and sub roof beam loading is also provided in lbs/ft for the beams.
3. The provided maximum allowable rigging loads include a 1.25 impact factor.

RIGGING CROSS SECTION



PAVILION AND STAGE CROSS SECTION

NTS

